



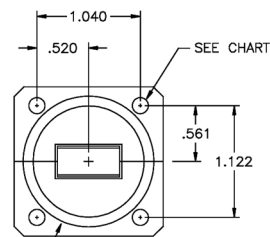
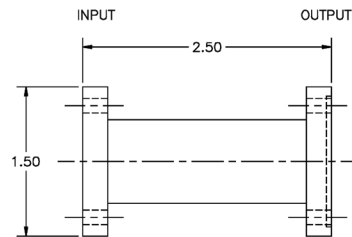
Ku-Band Receive Reject Filter

Model 16606

This uplink filter offers extremely low loss while suppressing downlink frequencies and other services (e.g. DEMS point-to-point).

Specifications:

Passband:	13.75 - 14.50 GHz
Insertion Loss:	0.12 dB Max
VSWR:	1.15:1 Max
Reject Band:	10.0 - 12.1 GHz
Rejection:	50 dB Min 30 dB Min @ 12.75 GHz
Flanges:	See Chart
Weight:	0.5 lbs (0.2 Kg)
Dimensions:	2.5" x 1.5" x 1.5" (63mm x 38mm x 38mm)
Finish:	Gloss White Lacquer



O-RING GROOVE (US MIL TYPE)
1.314 OD X 1.116 ID X .050 DEEP
O-RING GROOVE (IEC TYPE)
1.319 OD X 1.071 ID X .079 DEEP

MODEL	INPUT FLANGE (WR75)		OUTPUT FLANGE (WR75)		O-RING GROOVE
	FLANGE	HOLE DIA/THREAD	FLANGE	HOLE DIA/THREAD	
16606	FLAT	.144	GROOVED	.144	US MIL TYPE
16606-1	PBR120	.161	PBR120	.161	IEC TYPE

MICROWAVE FILTER CO., INC.
6743 KINNE STREET, E. SYRACUSE, NY 13057
E-Mail: mfcsales@microwavefilter.com

800-448-1666 • 315-438-4700
Web: www.microwavefilter.com