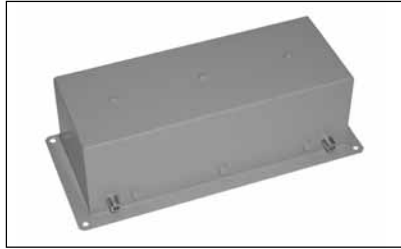


FM Bandpass Filter

3634FM Tunable Bandpass Filters

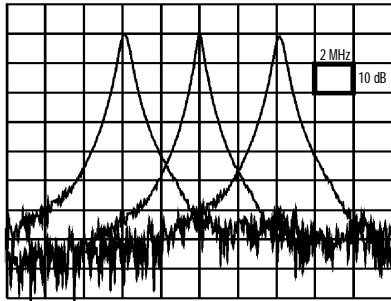


3634FM Series

This filter can be tuned to any FM receive channel from 88 to 108 MHz by means of three self-locking screwdriver adjustments. This filter is used for isolating a desired FM channel in the presence of strong interference from undesired signals. It can be shipped factory tuned to the customer's specified frequency.

Specifications:

3 dB bandwidth: 350 KHz \pm 10%
 Insertion Loss at Tuned Frequency: 5 dB Max
 Rejection: 20 dB Min \pm 800 KHz
 Return Loss: 14 dB Min



Typical Frequency Response of 3634FM

Mechanical Specifications:

Baseplate Dimensions: 10" x 4.5"
 Rack Mount Available Upon Request
 Connectors: 75 ohm - Type "F"

Ordering Information:

3634FM-(Fo)
 Fo = Center Frequency (Optional)

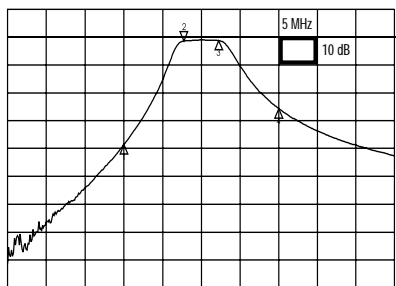
TV Channel Bandpass Filter

3376 Economical VHF-TV Bandpass Filter



3376 Series

The small size of this 3 section filter makes it suitable for installation within equipment or on congested panel layouts. It may be used for processor clean-up or for filtering off air receptions. The 3376(5) contains five sections for increased selectivity making it suitable for adjacent channel rejection.



Typical Frequency Response of 3376(3)

Model 3376(3) Channels	Video-Aural Insertion Loss (Max)	Semi Adj Carrier Rejection (Min)
2 to 36	4.0 dB	20 dB
Model 3376(5) Channels	Video-Aural Insertion Loss (Max)	Adjacent Carrier Rejection (Min)
2 to 6 (only)	4.0 dB	15 dB
Return Loss: 14 dB Min		

Mechanical Specifications:

Baseplate Dimensions: 4" x 1.5"
 Rack Mount Available Upon Request
 Connectors: 75 ohm - Type "F"

Ordering Information:

3376(3)-(Channel #)
 3376(5)-(Channel #)