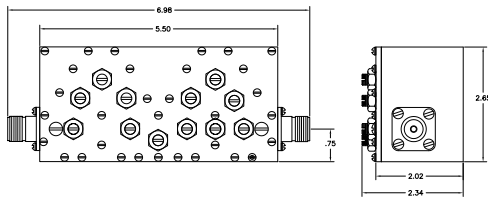


GSM-900 Filters (continued)

(E) GSM-900 Receive Filter



14542



Model 14542

This bandpass filter isolates the receive band from potential interference from the transmit band and virtually all other transmissions from DC to 2000 MHz.

- GSM-900 and EGSM-900 compatible.

Specifications:

Passband:

Receive Band: 880-915 MHz
 Passband Insertion Loss: 1.2 dB (Max)
 Passband Return Loss: 18 dB (Min)

Rejection:

DC-845 MHz: 40 dB (Min)
 925-2000 MHz: 40 dB (Min)

Power Rating: 35 Watts (Max)
 Operating Temperature: 0°C to +50°C
 Storage Temperature: -40°C to +85°C
 Operating Humidity: Up to 90%, Non-Condensing
 Connectors: N Female
 Impedance: 50 ohms

ISM (900 MHz) Interference Filters

MFC provides various filters for use in wireless broadband systems operating within the ISM band of (902-928) MHz.

These filters remove interference originating from services operating in nearby frequency bands (e.g. - paging systems & cellular phone providers).



15345

Model 15345 ISM Notch Filter

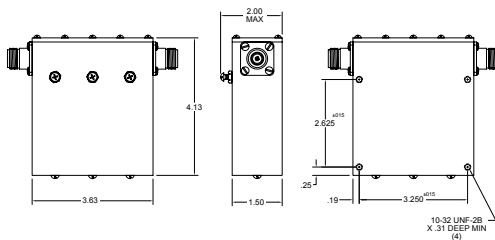
This notch filter is designed specifically to eliminate interference caused by high-powered paging systems operating at 930 MHz.

It is compact and sturdy and operates over a wide temperature range, making it ideal for installation in virtually any indoor or outdoor enclosed environment.

.....and for those unenclosed, outdoor applications we also offer a weatherized version – **Model 15345W**.

Specifications:

Notch Frequency: 930 MHz
 Insertion Loss: 35 dB Min
 Passband: 902.5-927.5 MHz (1 Watt Max)
 Passband Loss: 1.0 dB Typ, 3 dB Typ at 927.5 MHz
 Impedance: 50 Ohms
 Connectors: N Female
 Temperature Range: -20°C to +50° C



MICROWAVE FILTER COMPANY, INC.

6743 Kinne Street, East Syracuse, NY 13057 • Toll Free: 800-448-1666 or 888-206-6610

www.microwavefilter.com • email: mfcsales@microwavefilter.com • International: 315-438-4700