



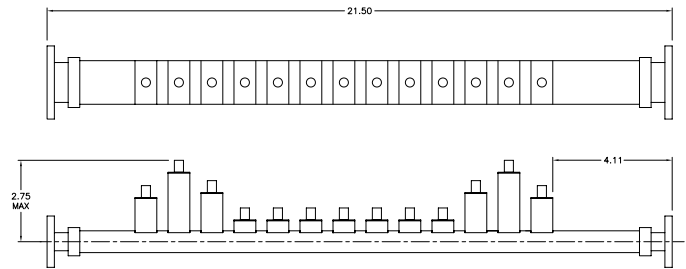
# X-Band Transmit Reject Filter

## Model 16601

This downlink filter provides a CPR137 interface and offers extremely low loss, while exhibiting very high suppression of the uplink (transmit) band.

### Specifications:

Passband:	7.25 - 7.75 GHz
Insertion Loss:	0.20 dB
VSWR:	1:15:1
Rejection Band:	7.9 - 8.4 GHz
Rejection:	90 dB Min
Power:	250 Watts
Flanges:	CPR137G
Weight:	3.5 lbs (1.63 Kg)
Dimensions:	21.5" x 2.69" x 3.7" (546mm x 68mm x 94mm)
Finish:	Gray Lacquer



**MICROWAVE FILTER CO., INC.**  
6743 KINNE STREET, E. SYRACUSE, NY 13057  
E-Mail: [mfcsales@microwavefilter.com](mailto:mfcsales@microwavefilter.com)

800-448-1666 • 315-438-4700  
Web: [www.microwavefilter.com](http://www.microwavefilter.com)