



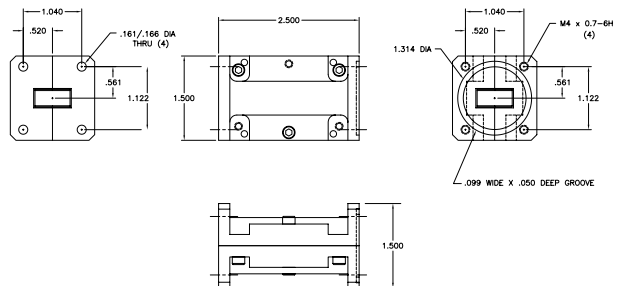
Ku-Band Transmit Reject Filter

Model 16522

Designed for full Ku-Band downlink reception and uplink suppression. This versatile filter is ideal for VSAT applications around the world.

Specifications:

Passband:	10.70 - 12.75 GHz
Insertion Loss:	0.1 dB Max
VSWR:	1.20:1 Max
Reject Band:	13.75 - 14.50 GHz
Rejection:	70 dB Min
Operating Temperature:	-55°C TO +70°C
Flanges:	WR75 Cover WR75 Grooved
Weight:	0.25 lbs (0.11 Kg)
Dimensions:	2.5" x 1.5" x 1.5" (63mm x 38mm x 38mm)
Finish:	Gray Lacquer



MICROWAVE FILTER CO., INC.
6743 KINNE STREET, E. SYRACUSE, NY 13057
E-Mail: mfcsales@microwavefilter.com

800-448-1666 • 315-438-4700
Web: www.microwavefilter.com