



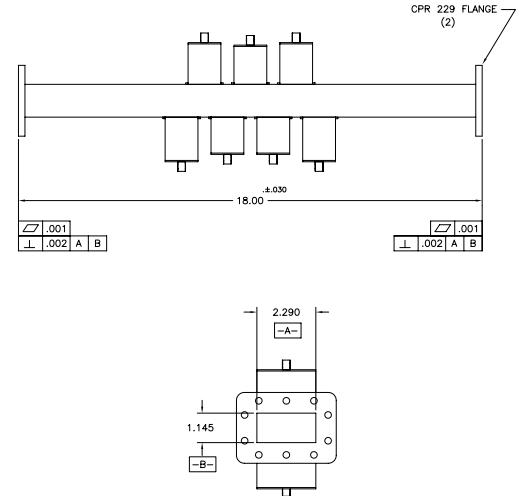
# Super Extended C-Band Radar Reject Filter

## Model 16506

This ultra-low loss filter was designed specifically to suppress Aircraft Radionavigation located right above the Super Extended receive band.

### Specifications:

Passband:	3.4 - 4.2 GHz
Insertion Loss:	0.05 dB Typ at 3.4-4.1 GHz 0.25 dB Typ at 4.1-4.2 GHz
VSWR:	1.2:1 Max
Pressurization:	Tested to 1.0 PSIG
Reject Band:	4.24 - 4.35 GHz
Rejection:	25 dB Min
Flanges:	CPR229F
Weight:	5.3 lbs (2.39 Kg)
Dimensions:	18.0" x 3.8" x 5.4" (457mm x 96mm x 137mm)
Finish:	White Lacquer



**MICROWAVE FILTER CO., INC.**  
6743 KINNE STREET, E. SYRACUSE, NY 13057  
E-Mail: [mfcsales@microwavefilter.com](mailto:mfcsales@microwavefilter.com)

800-448-1666 • 315-438-4700  
Web: [www.microwavefilter.com](http://www.microwavefilter.com)