

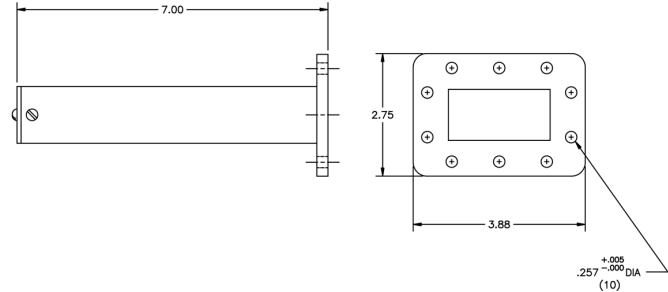


# Waveguide Termination

## WT229

### Specifications:

Frequency Range:	3.3-4.9 GHz
VSWR:	1.05:1 Typ
Power:	2 Watts Avg
Flange:	WR229 CPR



**MICROWAVE FILTER CO., INC.**  
6743 KINNE STREET, E. SYRACUSE, NY 13057  
E-Mail: [mfcsales@microwavefilter.com](mailto:mfcsales@microwavefilter.com)

800-448-1666 • 315-438-4700  
Web: [www.microwavefilter.com](http://www.microwavefilter.com)