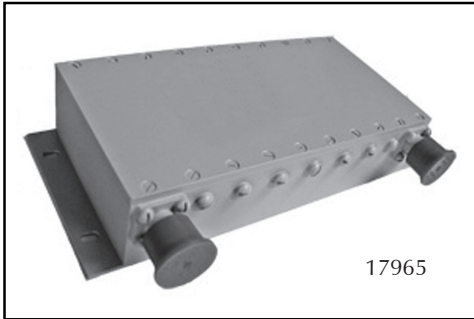
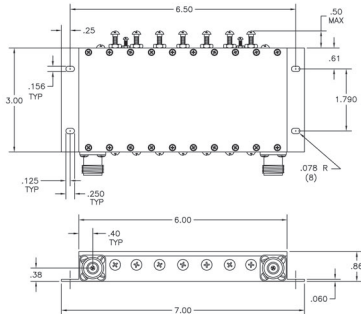


ISM (900 MHz) Interference Filters



17965



For unenclosed, outdoor applications, order the weatherized version, Model 17965W.

Model 17965 ISM Bandpass Filter

This bandpass filter allows smooth operation within the (902-928) MHz ISM band by providing superior attenuation of other services operating above or below the ISM band (e.g. cellular phone providers).

Specifications:

Center Frequency (F ₀)	... 915 MHz
Relative BW3 26 MHz Min
Insertion Loss at (F ₀) 1.5 dB Typ
VSWR (F ₀) 1.5:1 Max
Rejection 30 dB Min @ 896 MHz
 30 dB Min @ 934 MHz
 >70 dB Typ @ 5-875 MHz and 955-2000 MHz
Impedance 50 ohms
Power 90 Watts CW
Connectors N Female
Operating Temp -10°C to +65° C

Model #	Connector Configuration	
	Input	Output
17965	N Female	N Female
17965-1	SMA Female	SMA Female



MICROWAVE FILTER COMPANY, INC.

6743 Kinne Street, East Syracuse, NY 13057 • Toll Free: 800-448-1666 or 888-206-6610
 www.microwavefilter.com • email: mfcsales@microwavefilter.com • International: 315-438-4700