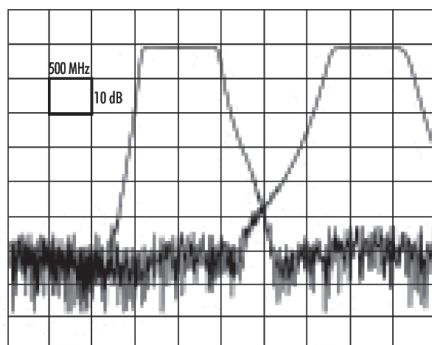
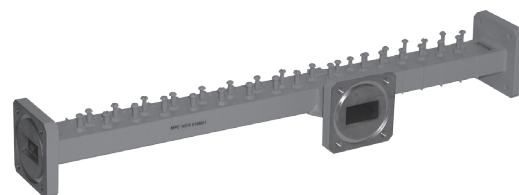




# Ku-Band Diplexer

## Model 14510



Typical Frequency Response of 14510

### 14510 Series

The model 14510 diplexer is used to combine the downlink and uplink bands to allow for simultaneous transmit and receive operation. Each portion of the diplexer has integrated bandpass filters, matched for optimal system performance. By combining the individual bandpass filters into a single diplexer, only a single waveguide run on the transmit tower is required, reducing cost and improving signal quality.

### Diplexer Model 14510

	Uplink	Downlink
Passband	14.0-14.5 GHz	11.7-12.2 GHz
Insertion Loss	0.35 dB Max	0.35 dB Max
VSWR	1.375:1 Max	1.375:1 Max
Isolation	80 dB Min	80 dB Min

### Mechanical Specifications:

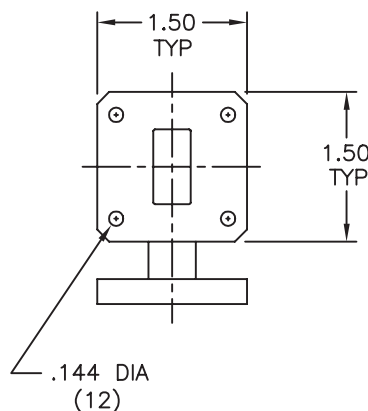
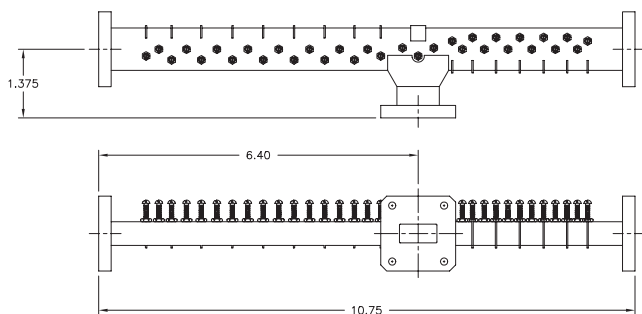
Weight: 0.95 lbs (0.43 Kg)

Dimensions: 10.75”L x 1.5”H x 2.125”W  
(273mm x 38mm x 54mm)

Finish: Gray Lacquer

### Common Options:

Units are made of WR75 waveguide and come standard with cover flanges. Each unit can be custom built for single channel or partial satellite bands, with connectors and mechanical configurations designed to meet customer requirements. Temperature compensated models are also available, where outdoor applications are necessary.



**MICROWAVE FILTER CO., INC.**  
6743 KINNE STREET, E. SYRACUSE, NY 13057  
E-Mail: [mfcsales@microwavefilter.com](mailto:mfcsales@microwavefilter.com)

800-448-1666 • 315-438-4700  
Web: [www.microwavefilter.com](http://www.microwavefilter.com)